

aquabot

Quick Start Guide Aquabot Pro



Chlorine
Max 4 ppm



pH
7.0 - 7.8



Temp
5 - 35°C



NaCl
Max 4,000 ppm

EN



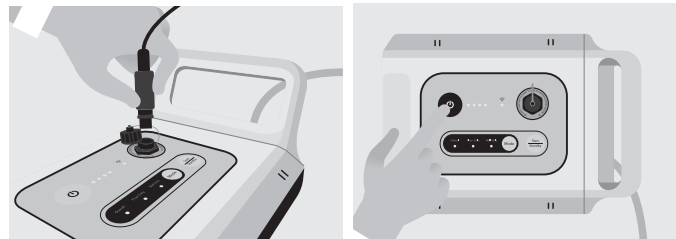
**DO NOT ENTER THE POOL
WHILE THE ROBOT IS
RUNNING IN THE POOL.**

For full user manual
please scan



1. Charging & Power On

- Charge the device ensuring that the battery has a full charge. Before charging, double check that the device is turned off. Wipe away any water from the charging pin.
- To turn on the robot, hold the floating battery platform, then turn it on by pressing the ON/OFF switch. Once you turn on the device and the Wi-Fi LED light starts blinking, it is ready to pair with the App.



2. Download the BWT Robotics App and Connect to Wi-Fi

- Search for "BWT Robotics" on the Apple App Store or Google Play Store, download the app, and initiate the connection to unlock customized cleaning features.
- If the Wi-Fi indicator light is flashing, it indicates the robot is waiting to be paired.
- If the Wi-Fi indicator light is solid on, it indicates the robot is already connected. To reset Wi-Fi, press and hold the "⏻" button for at least 8 seconds until you see the Wi-Fi indicator starts flashing again.

IOS



Android



3. Start Cleaning

- For the initial use, please soak the sponges on both sides of the scrubbing brushes in water for at least 5 minutes. After that, put the robot into the pool in a vertical position to release any air trapped inside. Make sure the unit sinks to the very bottom of the pool and does not float.
- Run the robot with the App, or just select the cleaning mode on the Floating Battery Platform, then push the START button. The robot will start cleaning after 15 seconds.
- Confirm the Floating Battery Platform is free of obstructions



ON/OFF Button
Turns the robot on and off.



Start & Standby
Start or pause the operation.



Charging Cap
Open the cap and charge the robot.



Mode
Select the cleaning mode you desire.

Cleaning Mode Indicators

- **Overall:** Floor and wall cleaning.
- **Floor Only:** Floor cleaning only.
- **Wall Only:** Wall and waterline cleaning only.



Battery Life and Charging Indicators



Wi-Fi Connection and Disconnection Indicator

4. Care & Maintenance

- The robot will move to the nearest edge when it completes the cleaning cycle or when the battery life drops to 10%.
- When lifting the robot out of the pool, hold it vertically to drain the water out.
- When not in use, please store the pool cleaner in a shaded area, away from direct sunshine or any heat source. (We recommend taking the cleaner out of the water after each use)

5. Warnings & Cautions

Minimum depth: 0.5 m	Output voltage: 25.5V DC	Power : 250W
Maximum depth: 3.0 m	Power supply (IP65)	Input voltage: 100 ~ 240V AC 50/60 Hz

- Do not use the robot when there are people or objects in the pool.
- The power supply must be connected through a Ground Fault Current Interrupter (GFCI USA) or a Residual Current Device (RCD Europe) not exceeding 30 mA.
- Use only the original battery and power adapter.
- All parts must be replaced with original parts supplied by a BWT authorized service center.
- The connection to the power must meet local and national wiring rules.
- Keep out of children's reach.
- Any damages or failures caused by misuse, unauthorized repair, disassembly, or moisture getting inside the charging port may void the warranty.
- RESIDENTIAL USE ONLY.